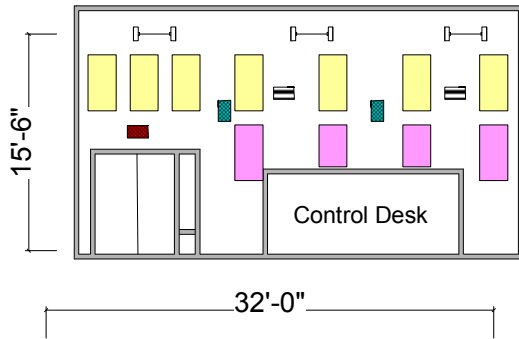
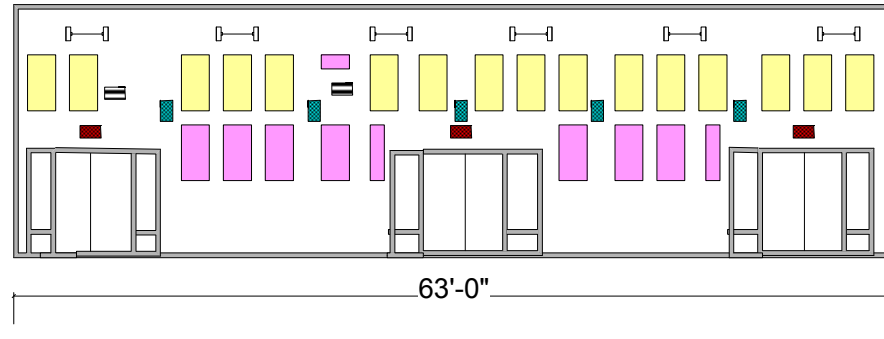


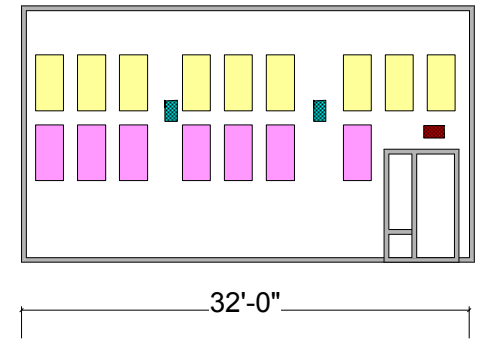
Total area of
back wall =
2286 sq. feet



Area of wall =
576 sq. feet



Area of wall =
1134 sq. feet



Area of wall =
576 sq. feet

Material List:

Phase 1:
32 – 4 x 2 Quiet Touch 2" panels
130 - Wall Fasteners (4 per 4 x 2)

Each 4 x 2 panel equals 8 sq. ft.
Phase 1 = 256 sq. feet of paneling
Total percentage of required coverage = 20%

Phase 2:
18 – 4 x 2 Quiet Touch 2" panels
1 – 1 X 2 Quiet Touch 2" panels
78 – Wall Fasteners

Each 4 x 2 panel equals 8 sq. ft.
Each 1 X 2 panel equals 2 sq. ft.

Phase 2 = 146 sq. feet of paneling
Total percentage of required coverage = 11%

Audio Visual
Presentations
Bend Oregon

Highland Baptist Church
Redmond, Oregon